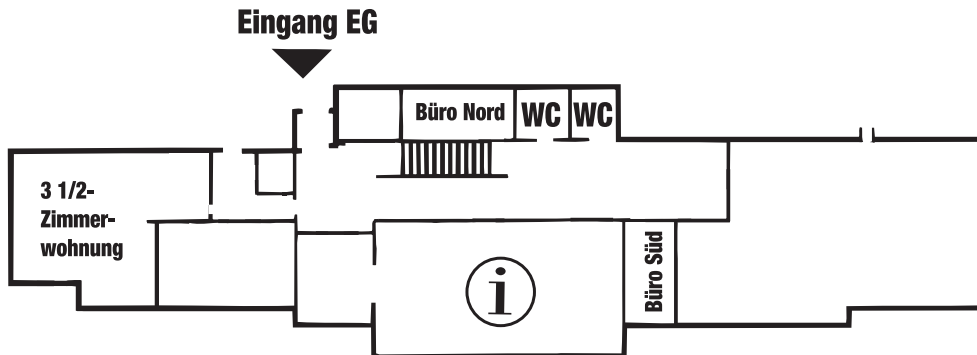




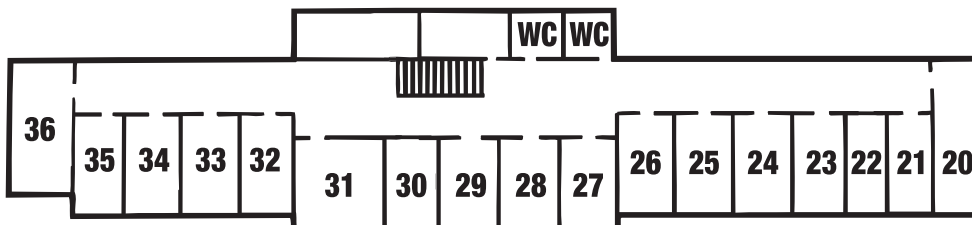
Eingangsgeschoss



Büros für Gäste

Nord	3.10m x 6.30m	19.53m ²
Süd	2.80m x 5.50m	15.40m ²

Obergeschoss



Aufenthaltsraum

31	5.3m x 4.8m	25.44m ²
----	-------------	---------------------

	Zimmer	
20	3	D/WC
21	1	D/WC
22	1	D/WC
23	2	D/WC
24	2	D/WC
25	2	D/WC
26	2	D/WC
27	2	D/WC
28	2	D/WC
29	2	D/WC
30	2	D/WC
32	2	D/WC
33	2	D/WC
34	2	D/WC
35	2	D/WC
36	3	D/WC
Total	32	